



Cím: 1117 Budapest, Pázmány Péter sétány 1/A, 6. emelet 6.127 szoba
1088 Budapest, Múzeum körút 4/C, Alagsor 61/A. szoba

Telefon: 372-2500/6800

Fax: 372-2500/6741, 372-2991

E-mail: operator@elte.hu

Honlap: iig.elte.hu

Stunnel How-To

In order to use Stunnel, you need to have a Caesar account. You can make your own account here: <https://ugykezelو.elte.hu> . (Both ELTE faculty/staff and students can register for Caesar and use Stunnel.)

You may want to access websites, journals or software download pages which are accessible only through ELTE's network (such as EISZ).

Stunnel allows you to reach such services from home or other external locations.

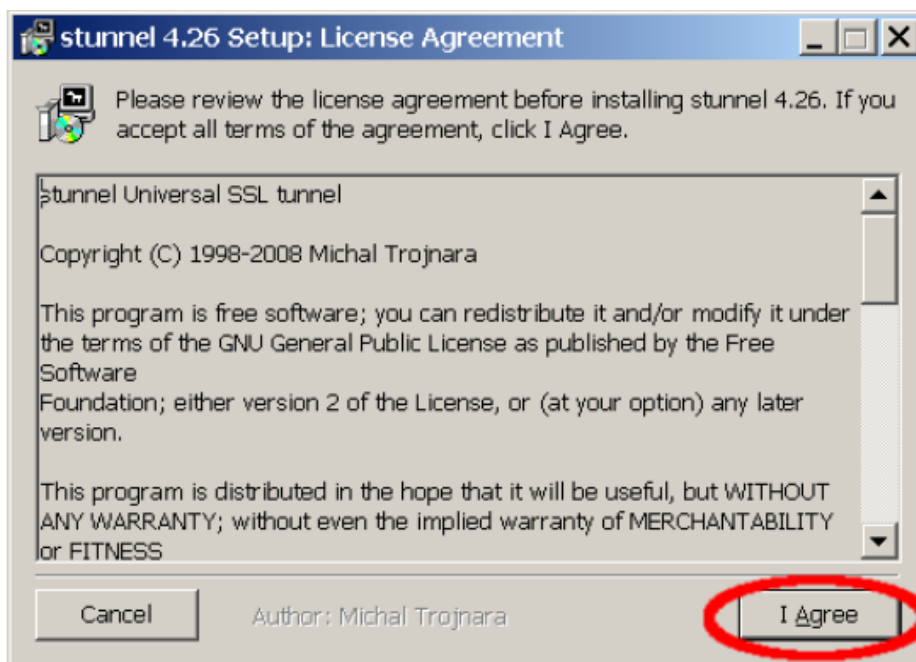
You can install Stunnel to Windows as follows:

Download Stunnel from here (<http://caesar.elte.hu/download/stunnel/>).

When installing the exe file, Windows will ask if you want to run the program.

Click "Run".

Then click "I Agree".





Cím: 1117 Budapest, Pázmány Péter sétány 1/A, 6. emelet 6.127 szoba
1088 Budapest, Múzeum körút 4/C, Alagsor 61/A. szoba

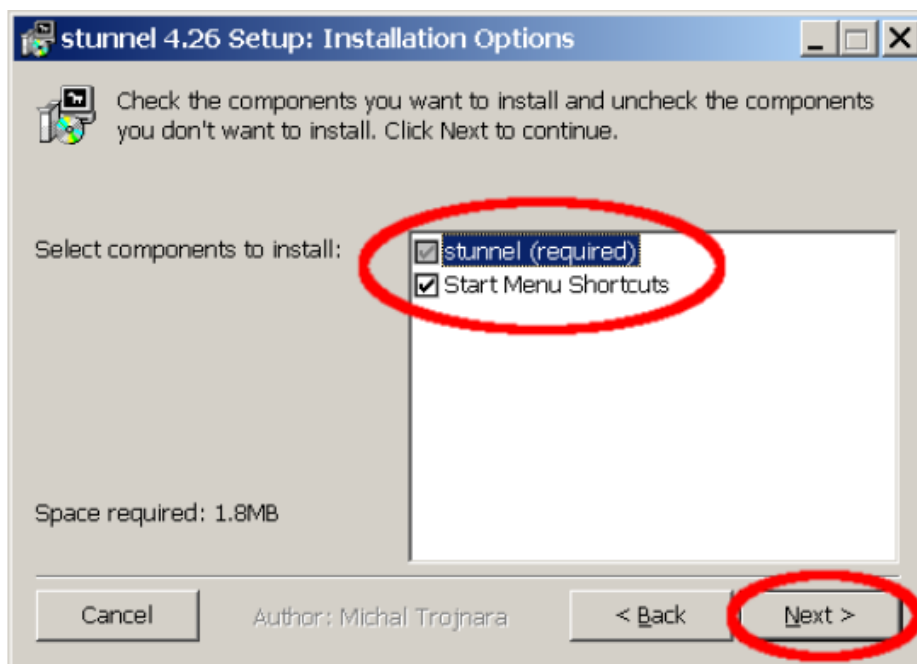
Telefon: 372-2500/6800

Fax: 372-2500/6741, 372-2991

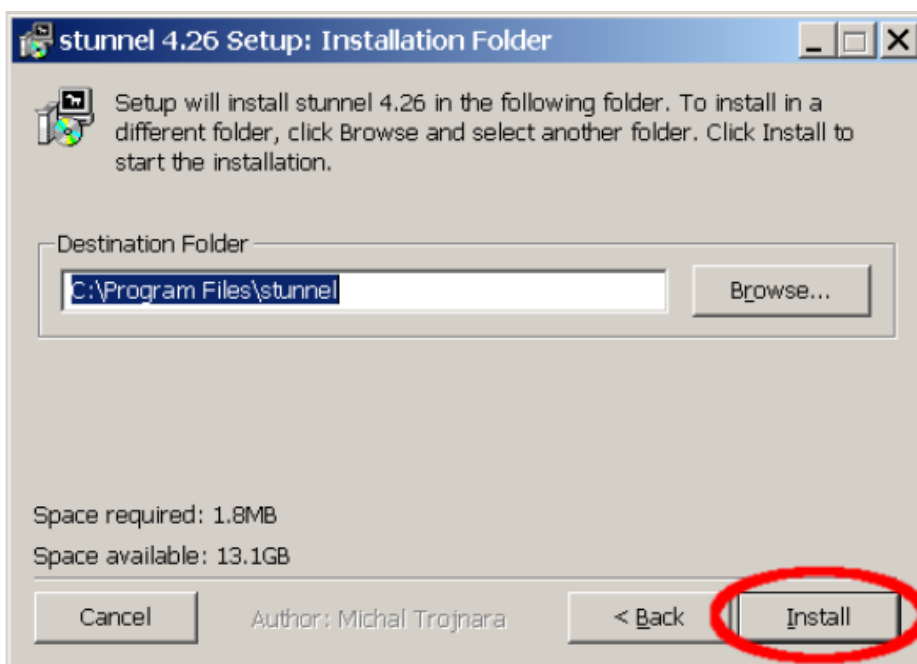
E-mail: operator@elte.hu

Honlap: iig.elte.hu

In the next window, check the boxes, and click "Next".



Next you will be asked where to install Stunnel. You can change the Destination Folder, but you may as well leave it at the default value. Click "Install".





Cím: 1117 Budapest, Pázmány Péter sétány 1/A, 6. emelet 6.127 szoba
1088 Budapest, Múzeum körút 4/C, Alagsor 61/A. szoba

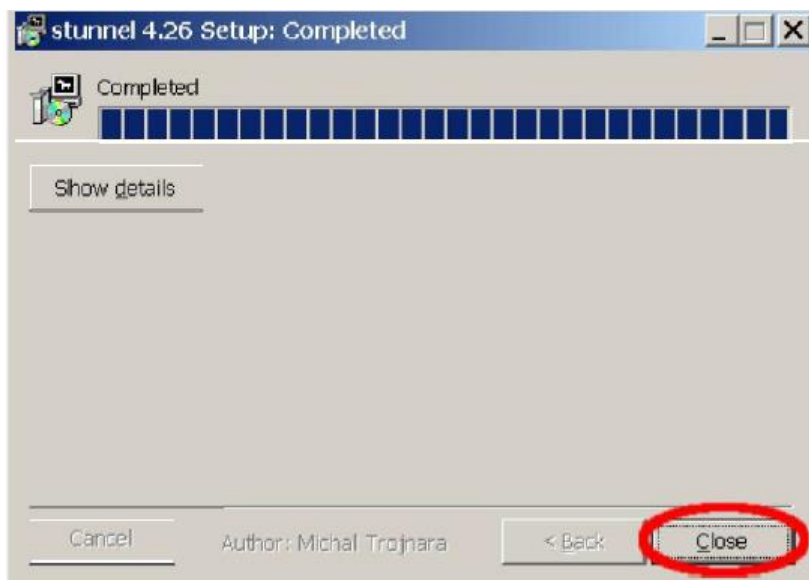
Telefon: 372-2500/6800

Fax: 372-2500/6741, 372-2991

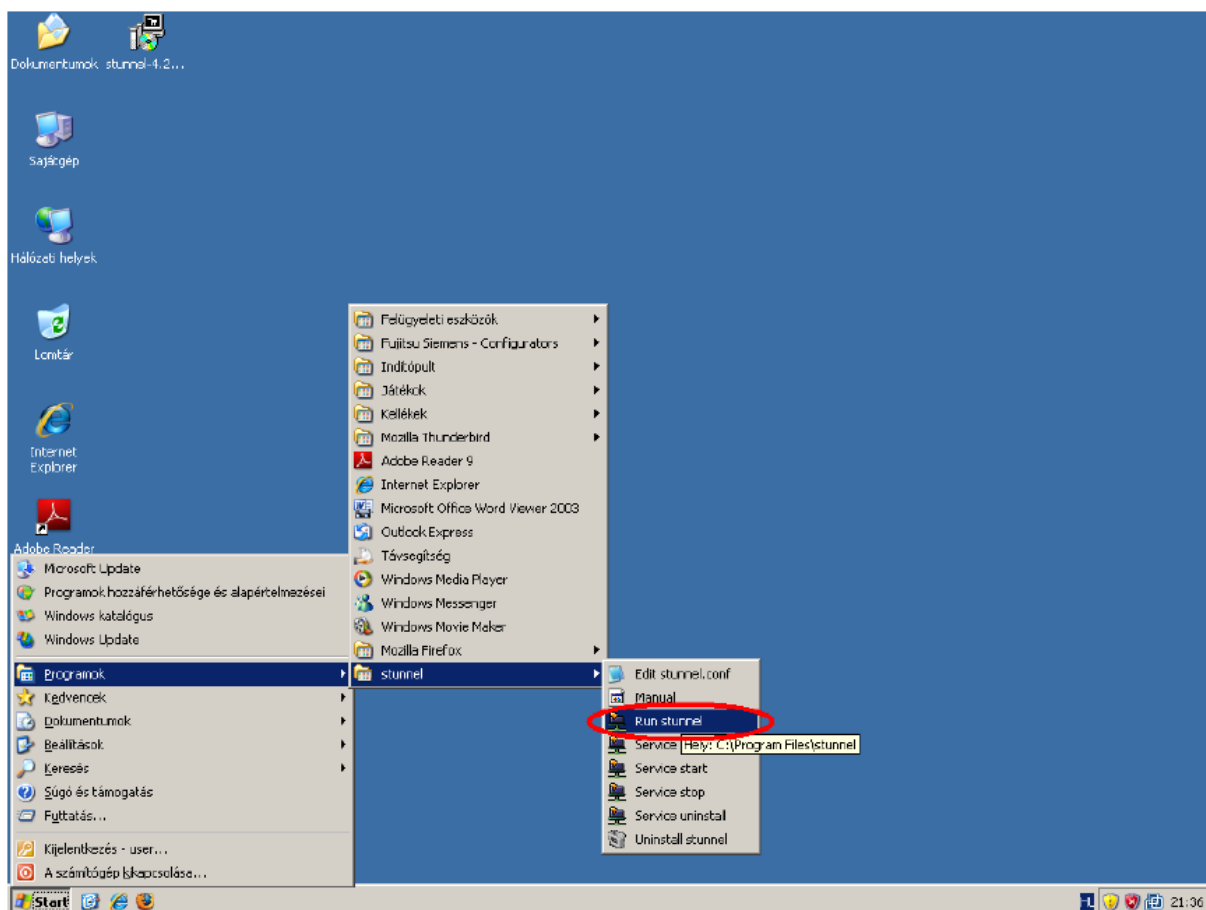
E-mail: operator@elte.hu

Honlap: iig.elte.hu

After installation has completed, click on "Close".



Now you can run Stunnel from "Start menu/Program Files/stunnel/Run stunnel".





Cím: 1117 Budapest, Pázmány Péter sétány 1/A, 6. emelet 6.127 szoba
1088 Budapest, Múzeum körút 4/C, Alagsor 61/A. szoba

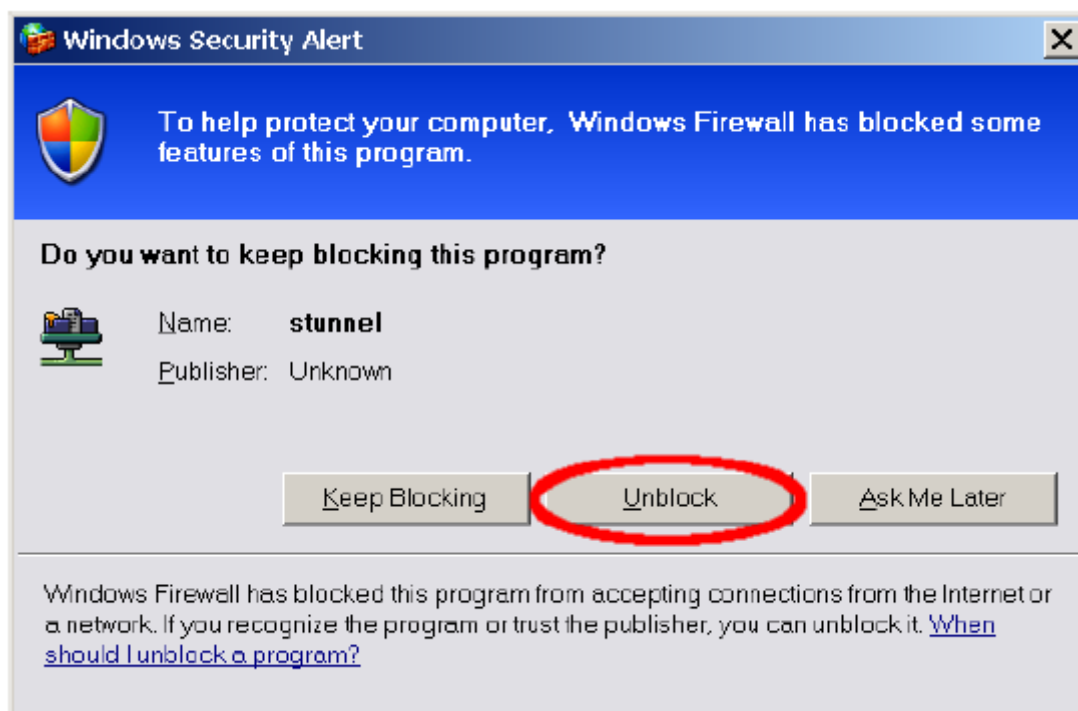
Telefon: 372-2500/6800

Fax: 372-2500/6741, 372-2991

E-mail: operator@elte.hu

Honlap: iig.elte.hu

Windows firewall may ask if you want to keep blocking the program. Click Unblock.





Cím: 1117 Budapest, Pázmány Péter sétány 1/A, 6. emelet 6.127 szoba
1088 Budapest, Múzeum körút 4/C, Alagsor 61/A. szoba

Telefon: 372-2500/6800

Fax: 372-2500/6741, 372-2991

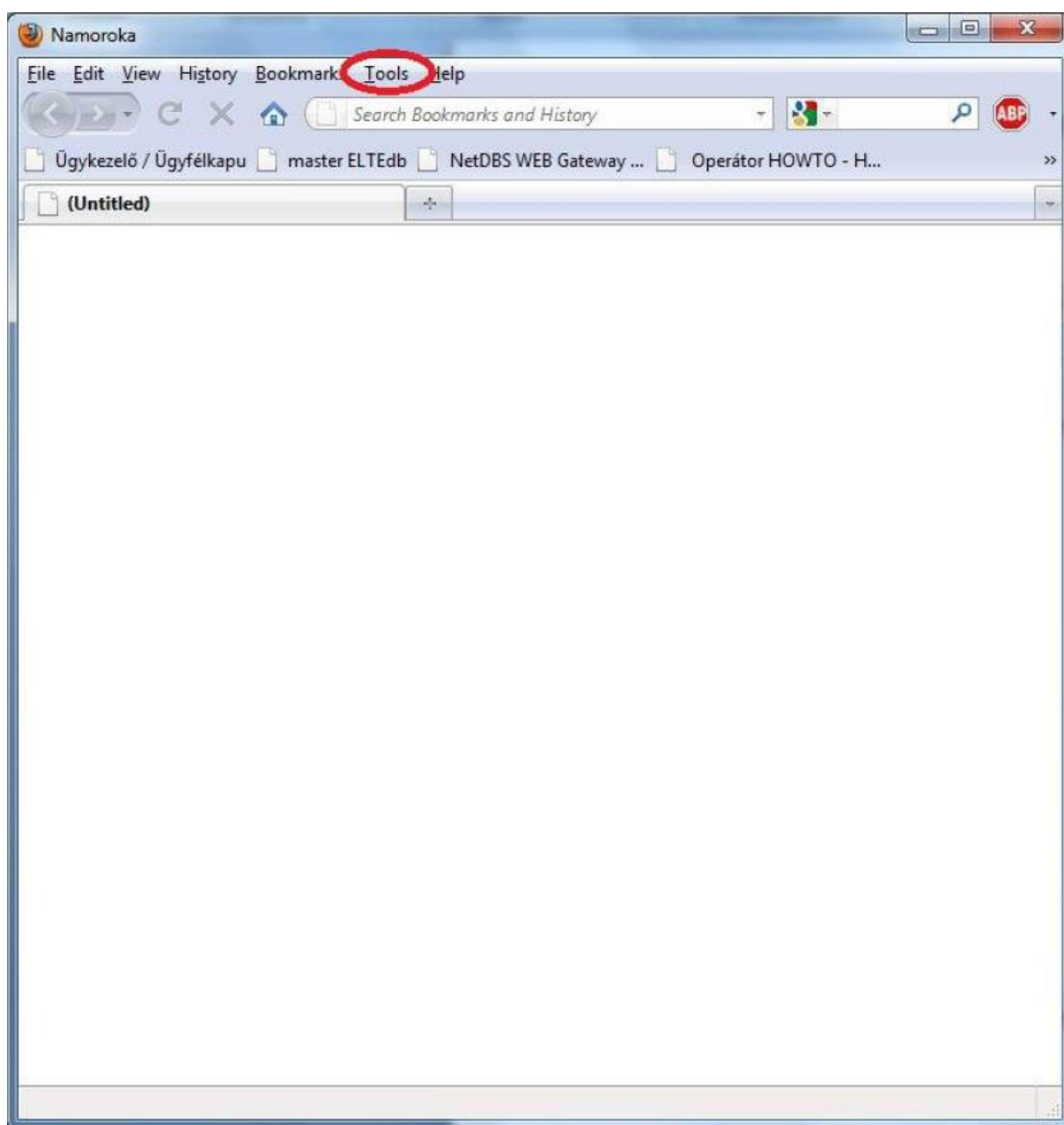
E-mail: operator@elte.hu

Honlap: iig.elte.hu

In order to use Stunnel, you need to set your browser, too.

Here you can find the settings for Mozilla Firefox. To do the settings in Internet Explorer, the procedure is almost identical. **Mozilla Firefox settings**

Open Firefox and click on Tools.





Cím: 1117 Budapest, Pázmány Péter sétány 1/A, 6. emelet 6.127 szoba
1088 Budapest, Múzeum körút 4/C, Alagsor 61/A. szoba

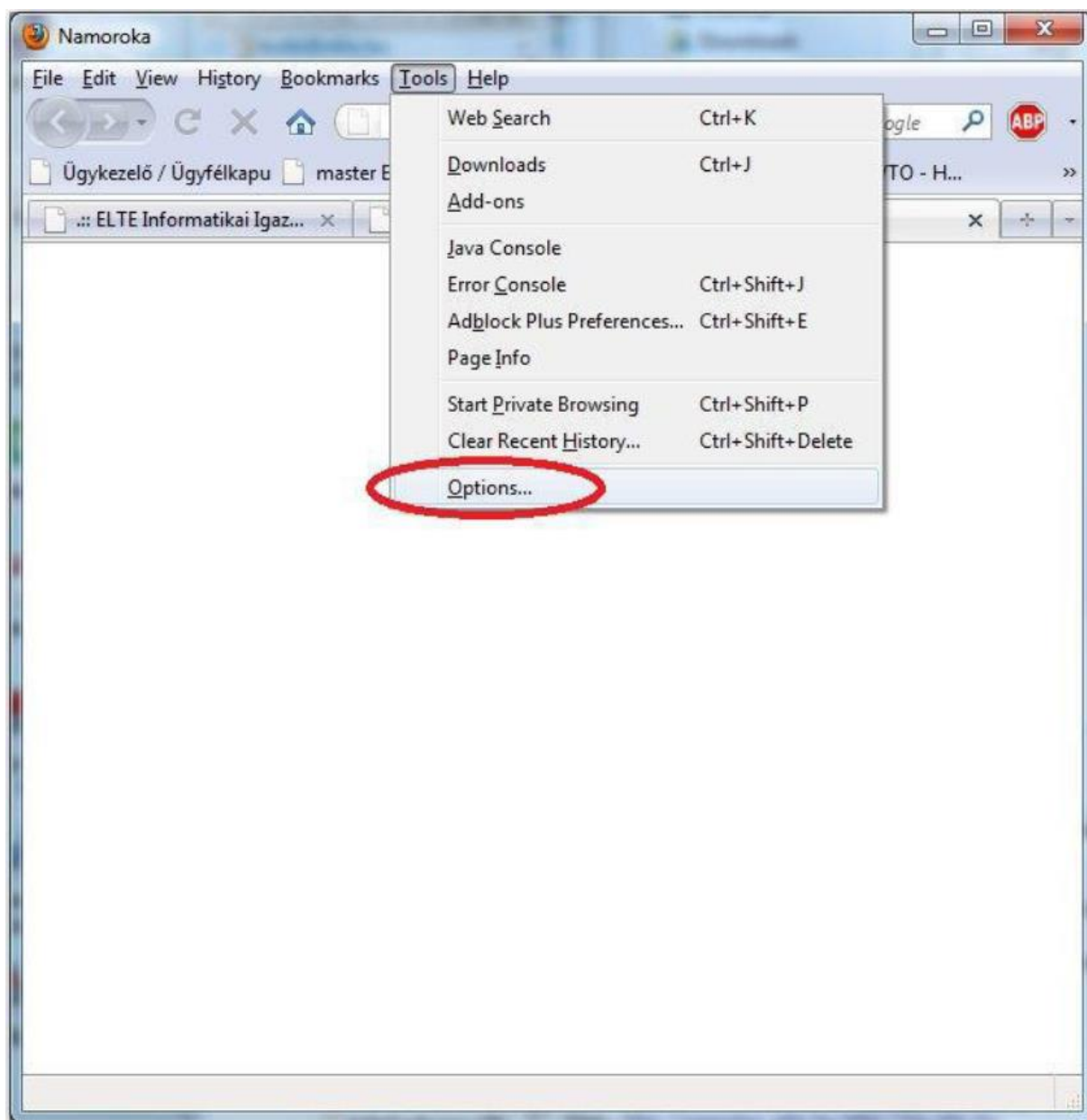
Telefon: 372-2500/6800

Fax: 372-2500/6741, 372-2991

E-mail: operator@elte.hu

Honlap: iig.elte.hu

Select Options.





Cím: 1117 Budapest, Pázmány Péter sétány 1/A, 6. emelet 6.127 szoba
1088 Budapest, Múzeum körút 4/C, Alagsor 61/A. szoba

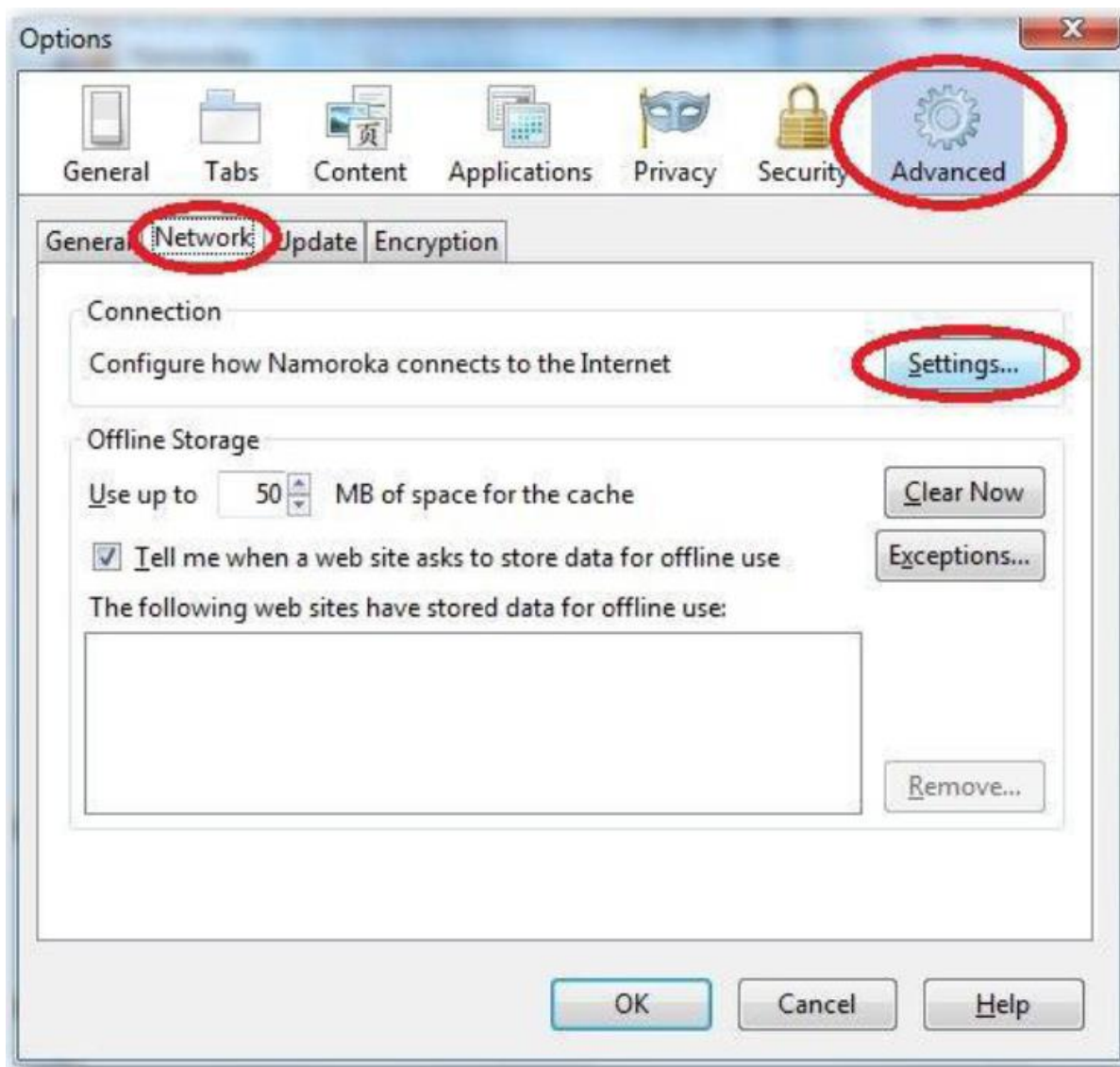
Telefon: 372-2500/6800

Fax: 372-2500/6741, 372-2991

E-mail: operator@elte.hu

Honlap: iig.elte.hu

Select Advanced, click on Network and then on Settings.





Cím: 1117 Budapest, Pázmány Péter sétány 1/A, 6. emelet 6.127 szoba
1088 Budapest, Múzeum körút 4/C, Alagsor 61/A. szoba

Telefon: 372-2500/6800

Fax: 372-2500/6741, 372-2991

E-mail: operator@elte.hu

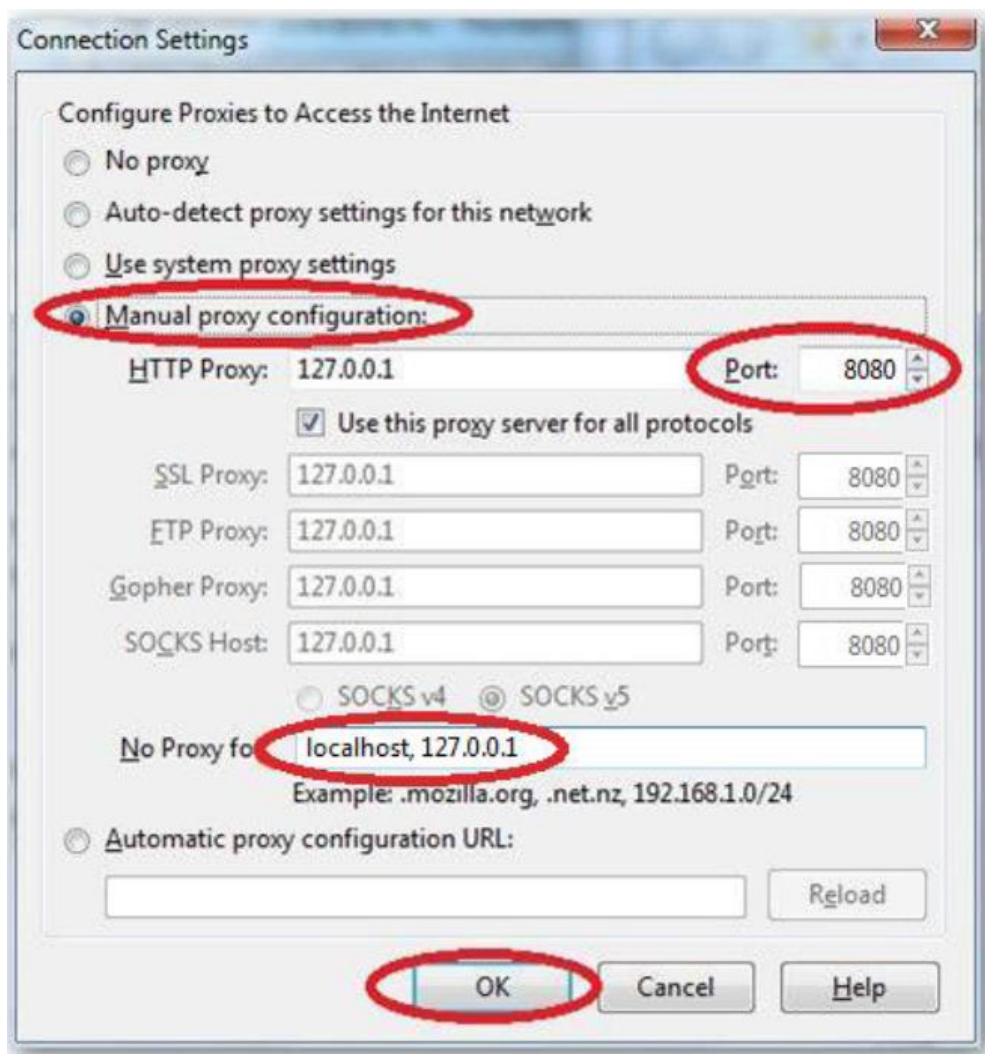
Honlap: iig.elte.hu

Select the Manual proxy configuration, and enter the following values:

HTTP Proxy: 127.0.0.1

Port: 8080

No proxy for: localhost, 127.0.0.1



Click OK.

Now you can access the services as if you were using a computer located at ELTE.

Mozilla Firefox will ask for your Caesar ID and your Caesar password.

Note: After visiting websites through Stunnel, change the settings back to "No Proxy" and exit Stunnel.